

PANDUIT[™] infrastructure for a connected world

Network Infrastructure for the Enterprise

Preferred Parts – EMEA

Network Infrastructure for the Enterprise

Today's enterprise IP networks support ever-expanding converged applications for voice, data, and video, as well as functions such as intelligent lighting, security, safety systems, and more.

Panduit Enterprise Networks provide the industry's most comprehensive and holistic portfolio of products and services that enable sustainable, energy-efficient enterprises. Innovative design features provide easy installation, reduced maintenance costs, and improved network reliability and flexibility.

This catalog features the most common offering for an enterprise physical infrastructure deployment. For the complete enterprise offering, please contact your local Panduit representative or visit us at <http://www.panduit.com>.

Table of Contents

Copper Cable	3	Fibre Adapter Panels	11
RJ45 Patch Cords	4	Racks, Shelves and Accessories.....	12
28 AWG Patch Cords	4	Cable Managers.....	13
Patch Cord Accessories.....	4	Zone Enclosures	14
RJ45 Jack Module.....	5	Cabinets.....	15
Field Term Plug	5	Surface Mount Boxes	16
45° Angled Wire Caps	5	Audio Video Systems.....	16
Patch Panels, Kits and Accessories	6	Grounding	17
Faceplates	7 – 8	Power Distribution Unit.....	17
Fibre Optic Cable	9	Cable Ties.....	17
Fibre Connectors	10	Labeling	18
Fibre Patch Cords and Pigtails	10	Security Devices	18
OptiCam™ 2 Termination Tools	11	Tools.....	19
Fibre Enclosures	11		

Copper Cable



NUC6C04BU-CE



NUL6C04BU-KE



PUL6AM04WH-CEG



PFFY6X04WH-HED



PSW7A04BU-HED

Part Number	Description	Min. Order Qty. (MOQ)
Category 6 (U/UTP)		
NUC6C04BU-CE	Category 6, 4-pair, 24 AWG, U/UTP, EuroClass Eca, CM, Blue, 305m easy payout carton.	14
NUL6C04BU-KE	Category 6, 4-pair, 24 AWG, U/UTP, EuroClass Eca, LSZH-1, Blue, 305m easy payout carton.	30
NUZ6C04BU-KE	Category 6, 4-pair, 24 AWG, U/UTP, EuroClass Dca-s2-d2-a1, LSZH-1, Blue, 305m easy payout carton.	20
NUZ6C04WH-KE	Category 6, 4-pair, 24 AWG, U/UTP, EuroClass Dca-s2-d2-a1, LSZH-1, White, 305m easy payout carton.	20
NUY6C04BU-CE	Category 6, 4-pair, 24 AWG, U/UTP, EuroClass Cca-s1a-d1-a1, LSZH-1, Blue, 305m easy payout carton.	14
PUL6004WH-FE	Enhanced Category 6, 4-pair, 23 AWG, U/UTP, EuroClass Dca-s2-d2-a1, LSZH-1, White, 305m easy payout carton.	24
PUY6004WH-HE	Enhanced Category 6, 4-pair, 23 AWG, U/UTP, EuroClass Cca-s1a-d1-a1, LSZH-1, White, 305m easy payout carton.	20
Category 6A (U/UTP)		
NUL6X04BU-HEG	Category 6A, 4-pair, 23 AWG, U/UTP, EuroClass Dca-s2-d2-a1, LSZH-1, Blue, 305m reel.	24
NUY6X04BU-HEG	Category 6A, 4-pair, 23 AWG, U/UTP, EuroClass Cca-s1a-d1-a1, LSZH-1, Blue, 305m reel.	24
PUY6X04WH-HEG	Category 6A, 4-pair, 23 AWG, U/UTP, EuroClass Cca-s1a-d1-a1, LSZH-1, White, 305m reel.	24
PUL6AM04WH-CEG	Category 6A, Advanced MaTriX, 4-pair, 23 AWG, U/UTP, EuroClass Dca-s2-d2-a1, LSZH-1, White, 305m reel.	18
PUY6AM04WH-CEG	Category 6A, Advanced MaTriX, 4-pair, 23 AWG, U/UTP, EuroClass Cca-s1b-d1-a1, LSZH-1, White, 305m reel.	18
Category 6A Copper Cable U/FTP		
PUFY6X04WH-HED	Category 6A, 4-pair, 23 AWG, U/FTP, EuroClass Cca-s1a-a1, LSZH-1, White, 500m reel.	18
Category 6A Copper Cable F/FTP		
PFFY6X04WH-HED	Category 6A, 4-pair, 23 AWG, F/FTP, EuroClass Cca-s1a-a1, LSZH-1, White, 500m reel.	18
Category 7 Copper Cable S/FTP		
PSW7004WH-HED	Category 7, 4-pair, 23 AWG, S/FTP, EuroClass Cca-s1a-a1, LSZH-1, White, 500m reel.	36
Category 7A Copper Cable S/FTP		
PSW7A04BU-HED	Category 7A, 4-pair, 23 AWG, S/FTP, Euroclass B2ca-s1a-d1-a1, LSZH-1, Blue, 500m reel.	36

RJ45 Patch Cords[‡]



UTP6ASD*M**



UTPSP*



UTP28SP1M

UTP28X1MBU



STP6X1MIG

STP28X1MIG



PCBAND-Q**

Part Number	Description	Std. Pkg. Qty.	Std. Ctn. Qty.
Category 6 CM*			
UTPSP1MY	Category 6, UTP, CM patch cord with TX6(TM symbol) PLUS Modular Plugs on each end. White, 1m.	1	10
Category 6 28 AWG*			
UTP28SP1M	Category 6, UTP, 28 AWG, patch cord with TX6™ Modular Plugs on each end. White, 1m.	1	10
Category 6A CM*			
UTP6ASD1M	Category 6A 26 AWG patch cord, CM, White, 1m.	1	10
Category 6A 28 AWG*			
UTP28X1M	Category 6A performance, 28AWG, UTP patch cord, CM/LSZH, 1m.	1	10
Category 6A Shielded*			
STP6X1MIG	Category 6A, 10 GbE UTP, LSZH shielded patch cord with TX6A™ 10Gig™ Modular Plugs on each end. International Gray, 1m.	1	10
STP28X1MIG	Category 6A, 28 AWG, F/UTP patch cord with RJ45 modular plugs on each end, CM/LSZH, International Gray, 1m.	1	10
Patch Cord Bands			
PCBAND**-Q	Snaps onto individual patch cable for additional color-coding.	25	250

*For other colors, add IG (International Gray) or BU (Blue) after the length.

Ex: UTPSP1MBUY, UTP6ASD1MBU OR STP6X3MBU

‡Patch cords available in 1, 3, 5, 7m lengths.

Patch cord bands available in other colors. Contact Panduit Customer Service or check www.panduit.com for additional options.

Patch Cord Accessories



BKA6ASD8INBL

Part Number	Description	Std. Pkg. Qty.	Std. Ctn. Qty.
BKA6ASD8INBL	Break-away adapter, Category 6A, 26 AWG, flame-retardant (CM), SD, UTP, 8, Black.	1	10

RJ45 Jack Module



CJS688TGY



CJS6X88TGY



CJ688TGAW



CJ6X88TGBU



CJH6X88TGBL

Part Number	Description	Std. Pkg. Qty.	Std. Ctn. Qty.
Shielded Jacks			
CJS688TGY	Category 6, RJ45, 8-position 8-wire Mini-Com™ Universal Shielded Module with integral shield, Black.	1	50
CJS6X88TGY	Category 6A, RJ45, 10Gb/s, 8-position 8-wire Mini-Com™ Universal Shielded Module with integral shield, Black.	1	50
CJSH6X88TGY	Category 6A, RJ45, 8-position, 8-wire shielded spring shuttered Mini-Com™ Universal Jack Module, Blue.	1	50
Category 6 Unshielded Jacks			
CJ688TGAW	Category 6, RJ45, 8-position, 8-wire Mini-Com™ Universal Module, Arctic White.	1	50
CJ688TGBL	Category 6, RJ45, 8-position, 8-wire Mini-Com™ Universal Module Black.	1	50
CJ688TGBU	Category 6, RJ45, 8-position, 8-wire Mini-Com™ Universal Module Blue.	1	50
Category 6A Unshielded Jacks			
CJ6X88TGAW	Category 6A, RJ45, 8-position, 8-wire, 10 Gb/s UTP Mini-Com™ Universal Module Arctic White.	1	50
CJ6X88TGBL	Category 6A, RJ45, 8-position, 8-wire, 10 Gb/s UTP Mini-Com™ Universal Module Black.	1	50
CJ6X88TGBU	Category 6A, RJ45, 8-position, 8-wire, 10 Gb/s UTP Mini-Com™ Universal Module Blue.	1	50
CJH6X88TGBL	Category 6A, RJ45, 8-position, 8-wire spring shuttered Mini-Com™ Universal Jack Module, Black.	1	50

Additional colors available. Contact Panduit Customer Service or check www.panduit.com for additional information. Bulk packages available: Add -24 for pack of 24 or -C for pack of 100.

Field Term Plug



FP6X88MTG



FPUD6X88MTG

Part Number	Description	Std. Pkg. Qty.	Std. Ctn. Qty.
FP6X88MTG*	TX6A, Category 6A UTP field term RJ45 plug is a simple-to-attach plug for field termination of 4-pair unshielded twisted pair cable. Also compatible with Category 6 and 5e systems.	1	50
FPUD6X88MTG	Angled TX6A, Category 6A UTP field term RJ45 plug is a simple-to-attach plug for field termination and easy routing of 4-pair unshielded twisted pair cable. Also compatible with Category 6 and 5e systems.	1	50

*Bulk packaging available: Add -X for pack of 10.

45° Angled Wire Caps



CJLRCAPBU-C



CJUDCAPBU-C

Part Number	Description	Std. Pkg. Qty.	Std. Ctn. Qty.
CJLRCAPBU-C	Category 6A 45° angled left/right TG wire cap provides improved cable routing to jacks in confined spaces. For use with the TGSJT termination tool.	100	500
CJUDCAPBU-C	Category 6A 45° angled up/down TG wire cap provides improved cable routing to jacks in confined spaces. For use with the TGSJT termination tool.	100	500

For packs of 10, change -C to -X.
For unshielded applications and Mini-Com™ use only.

Patch Panels, Kits, and Accessories



CP24BLY



CPA48BLY



CP48HDBL



CPP24FMWBLY



CPP48HDWBLY



CPPA48HDWBLY

Part Number	Description	Std. Pkg. Qty.	Std. Ctn. Qty.
Shielded			
CP24BLY	24-port all metal modular patch panel, 1 RU.	1	10
CPA24BLY	24-port angled all metal modular patch panel, 1 RU.	1	10
CP24WSBLY	24-port all metal modular patch panel with strain relief bar, 1 RU.	1	10
CP48BLY	48-port all metal modular patch panel, 2 RU.	1	10
CPA48BLY	48-port angled all metal modular patch panel, 2 RU.	1	10
CP48WSBLY	48-port all metal modular patch panel with strain relief bar, 2 RU.	1	10
CP48HDBL	48-port shielded high-density modular patch panel, 1 RU.	1	10
CPA48HDBL	48-port angled shielded high-density modular patch panel, 1 RU.	1	10
Unshielded			
CPP24WBLY	24-port patch panel supplied with six (6) factory installed CFFP4 type front removable snap-in faceplates.	1	10
CPPL24WBLY	24-port patch panel with labels supplied with six (6) factory installed CFFP4 type front removable snap-in faceplates.	1	10
CPP24FMWBLY	24-port flush mount patch panel supplied with rear mounted faceplates.	1	10
CPPLA24WBLY	24-port angled patch panel with labels supplied with six (6) factory installed CFFP4 type front removable snap-in faceplates.	1	10
CPPA24FMWBLY	24-port angled flush mount patch panel supplied with rear mounted faceplates.	1	10
CPPL48WBLY	48-port patch panel with labels supplied with twelve (12) factory installed CFFPL4 type front removable snap-in faceplates.	1	10
CPP48FMWBLY	48-port flush mount patch panel supplied with rear mounted faceplates.	1	10
CPPLA48WBLY	48-port angled patch panel with labels supplied with twelve (12) factory installed CFFPL4 type front removable snap-in faceplates.	1	10
CPPA48FMWBLY	48-port angled flush mount patch panel supplied with rear mounted faceplates.	1	10
CPP48HDWBLY	48-port high density patch panel supplied with rear mounted faceplates.	1	10
CPPA48HDWBLY	48-port angled high density patch panel supplied with rear mounted faceplates.	1	10

Faceplates



CFPUKS2SAWY



CFPUKS3AWY



CM6CSSAW-X



CM6CESSAW-X



CFPE3AWY

Part Number	Description	Std. Pkg. Qty.	Std. Ctn. Qty.
UK Faceplates			
CFPUKS2SAWY	86mm x 86mm single gang faceplate frame and one 1/2-size sloped shuttered module insert.	1	10
CFPUKS4SAW-2GY	86mm x 146mm double gang faceplate frame and two 1/2-sized sloped shuttered module inserts.	1	10
CFPLUKF2SAW	86mm x 86mm single gang shuttered faceplate with label and icon slots. Accepts up to two Mini-Com™ Modules. Includes two M3.5-0.5x30mm panhead mounting screws.	1	10
CFPLUKF4SAW	86mm x 86mm single gang shuttered faceplate with label and icon slots. Accepts up to four Mini-Com™ Modules. Includes two M3.5-0.5x30mm panhead mounting screws	1	10
CFPUKS2BAWY	86mm x 86mm single gang faceplate holds up to two Mini-Com™ Modules. Supplied with CMB blank module.	1	10
CFPUKS3AWY	86mm x 86mm single gang faceplate hold up to three Mini-Com™ Modules.	1	10
CFP86S2AWY	86mm x 86mm single gang sloped faceplate with screw cover. Accepts two Mini-Com™ Modules.	1	10
UK Adapters			
CM6CSAW-X	Shuttered module snaps into standard UK LJU6C floor box mounting plates, faceplates and patch panels. Holds one Mini-Com™ Module. Compatible with standard UK LJU6C openings with 22.3mm x 36.9mm dimensions.	10	50
CM6CSSAW-X	Sloped shuttered module snaps into standard UK LJU6C floor box mounting plates, faceplates and patch panels. Holds one Mini-Com™ Module. Compatible with standard UK LJU6C openings with 22.3mm x 36.9mm dimensions.	10	50
CM6CESAW-X	Shuttered Euro-mod adapter accepts one Mini-Com™ Module (25mm x 50mm).	10	50
CM6CESSAW-X	Sloped shuttered Euro-mod adapter accepts one Mini-Com™ Module (25mm x 50mm).	10	50
German Faceplates			
CFPE3AWY	80mm x 80mm faceplate frame and one 55mm x 55mm sloped faceplate accepts up to three Mini-Com™ Modules. Supplied with mounting screws, metal mounting plate, label and label cover.	1	10
CFPAGS2AWY	50mm x 50mm adapter and one 1/2-size sloped module insert accepts up to two Mini-Com™ Modules. Supplied with mounting screws and metal mounting plate.	1	10
CFPAGS2SAWY	50mm x 50mm adapter and one 1/2-size sloped shuttered module insert accepts up to two Mini-Com™ Modules. Supplied with mounting screws and metal mounting plate.	1	10
CHES3AWY	55mm x 55mm sloped faceplate holds up to three Mini-Com™ Modules. Supplied with mounting screws, metal mounting plate, label and label cover.	1	10
FCFPAW	80mm x 80mm faceplate frame accepts all Panduit 50mm x 50mm adapters and the CHES3AWY adapter.	1	10

(continued on page 8)

Faceplates (continued)



CFPFF2AW



CFPFS1SAW



CFPFLS1SAW



CFPH4IW



CBTAL1WH-X



CFPDPS2SEW



CFPCH3AW

Part Number	Description	Std. Pkg. Qty.	Std. Ctn. Qty.
French Faceplates			
CFPFF2AW	45mm x 45mm adapter with one 1/2-size flat module insert accepts two Mini-Com™ Modules.	1	10
CFPFS2AW	45mm x 45mm adapter with one 1/2-size sloped module insert accepts two Mini-Com™ Modules.	1	10
CFPFS1SAW	45mm x 45mm adapter with one 1/2-size sloped shuttered insert. Accepts one Mini-Com™ Module.	1	10
CFPFS2SAW	45mm x 45mm adapter with one 1/2-size sloped shuttered module insert accepts up to two Mini-Com™ Modules.	1	10
CFPFLS1SAW	45mm x 45mm adapter with one-port sloped shuttered module with labels and icon slots. Accepts a single Mini-Com™ Module.	1	10
CFPFLS2SAW	45mm x 45mm adapter with two-port sloped shuttered module with labels and icon slots. Accepts up to two Mini-Com™ Modules.	1	10
CFP45LS2SAW	45mm x 45mm adapter with one 1/2-size sloped shuttered module insert with label and label cover. Accepts up to two Mini-Com™ Modules.	1	10
French Adapter			
CFA1SAW-X	Accepts a single Mini-Com™ Module, 22.5mm x 45mm shuttered adapter.	10	50
Italian Faceplates			
CFPH2IW	Single gang horizontal faceplate accepts two Mini-Com™ Modules.	1	10
CFPHS2IW	Single gang, sloped horizontal faceplate accepts two Mini-Com™ Modules.	1	10
CFPH4IW	Single gang horizontal faceplate accepts four Mini-Com™ Modules.	1	10
CFPHSL4IW	Single gang sloped horizontal faceplate accepts four Mini-Com™ Modules. Includes label and label cover.	1	10
Italian Adapters			
CGAGY-X	Adapter holds one Mini-Com™ Module in a Gewiss Playbus* Series Faceplate.	10	50
CBTAL1BL-X	Adapter label pocket accepts one Mini-Com™ Module for Bticino** Living International series faceplates.	10	50
CBTA1BL-X	Adapter accepts one Mini-Com™ Module for Bticino** Living International series faceplates.	10	50
CBTAL1WH-X	Adapter with label pocket accepts one Mini-Com™ Module for Bticino** Light series faceplates.	10	50
CBTA1WH-X	Adapter accepts one Mini-Com™ Module for Bticino** Light series faceplates.	10	50
Denmark Faceplates			
CFPDS2SEWY	Danish 77.1mm x 50.4mm faceplate with one 1/2-size sloped shuttered module insert holds up to two Mini-Com™ Modules. Supplied with label and label cover.	1	10
CFPDPS2SEW	Denmark faceplate with one 1/2-size sloped shuttered insert holds up to two Mini-Com™ Modules. Supplied with label and label cover.	1	10
CHLKCLS2SEW	Mini-Com™ Faceplate for use with LK Clic'Line^ Series faceplate snaps to LK back box. Includes one 1/2-size sloped shuttered insert that hold up to two Mini-Com™ Modules.	1	10
CFD66S2SEW	Mini-Com™ 2-position Sloped Shuttered OPUS 66^^ Adapter holds up to two Mini-Com™ Modules. Compatible with in-wall and surface mount installations.	1	10
Switzerland Faceplate			
CFPCH3AW	Mini-Com™ Faceplate, accepts three Mini-Com™ Modules.	1	10

*Playbus is a trademark of Gewiss S.p.

**Living International and Light are trademarks of Bticino S.p.A.

^Clic'Line is a trademark of Schneider Electric.

^^OPUS 66 is a trademark of Schneider Electric.

Fibre Optic Cable



Indoor-Outdoor
Fibre Cable

EuroClass Part	Description	EuroClass	Fibre Counts	UOM
Indoor-Outdoor Central Tube Fibre Cable				
FACCX**-14	50µm multimode OM3 fibre indoor-outdoor central tube fibre cable.	B2ca-s1a, d1, a1	4 – 24 Fibres	ft.
FACCX**-24	50µm multimode OM3 fibre indoor-outdoor central tube fibre cable.	Cca-s1a, d1, a1	4 – 24 Fibres	
FACCX**-40	50µm multimode OM3 fibre indoor-outdoor central tube fibre cable.	Eca	4 – 24 Fibres	
FACCZ**-14	50µm multimode OM4 fibre indoor-outdoor central tube fibre cable.	B2ca-s1a, d1, a1	4 – 24 Fibres	
FACCZ**-24	50µm multimode OM4 fibre indoor-outdoor central tube fibre cable.	Cca-s1a, d1, a1	4 – 24 Fibres	
FACCZ**-40	50µm multimode OM4 fibre indoor-outdoor central tube fibre cable.	Eca	4 – 24 Fibres	
FACC9**-14	9µm singlemode OS1/2 fibre indoor-outdoor central tube fibre cable.	B2ca-s1a, d1, a1	4 – 24 Fibres	
FACC9**-24	9µm singlemode OS1/2 fibre indoor-outdoor central tube fibre cable.	Cca-s1a, d1, a1	4 – 24 Fibres	
FACC9**-40	9µm singlemode OS1/2 fibre indoor-outdoor central tube fibre cable.	Eca	4 – 24 Fibres	

Indoor-Outdoor Tight Buffer Fibre Cable				
FAKCX**-14	50µm multimode OM3 fibre indoor-outdoor tight buffer fibre cable.	B2ca-s1a, d1, a1	4 – 24 Fibres	ft.
FAKCX**-24	50µm multimode OM3 fibre indoor-outdoor tight buffer fibre cable.	Cca-s1a, d1, a1	4 – 24 Fibres	
FAKCX**-40	50µm multimode OM3 fibre indoor-outdoor tight buffer fibre cable.	Eca	4 – 24 Fibres	
FAKZ**-14	50µm multimode OM4 fibre indoor-outdoor tight buffer fibre cable.	B2ca-s1a, d1, a1	4 – 24 Fibres	
FAKZ**-24	50µm multimode OM4 fibre indoor-outdoor tight buffer fibre cable.	Cca-s1a, d1, a1	4 – 24 Fibres	
FAKZ**-40	50µm multimode OM4 fibre indoor-outdoor tight buffer fibre cable.	Eca	4 – 24 Fibres	
FAKC9**-14	9µm singlemode OS1/2 fibre indoor-outdoor tight buffer fibre cable.	B2ca-s1a, d1, a1	4 – 24 Fibres	
FAKC9**-24	9µm singlemode OS1/2 fibre indoor-outdoor tight buffer fibre cable.	Cca-s1a, d1, a1	4 – 24 Fibres	
FAKC9**-40	9µm singlemode OS1/2 fibre indoor-outdoor tight buffer fibre cable.	Eca	4 – 24 Fibres	

Indoor-Outdoor Stranded Tube Fibre Cable				
FANCX**-40	50µm multimode OM3 fibre indoor-outdoor stranded tube fibre cable.	Eca	36 – 144 Fibres	ft.
FANCZ**-40	50µm multimode OM4 fibre indoor-outdoor stranded tube fibre cable.	Eca	36 – 144 Fibres	
FANC9**-40	9µm singlemode OS1/2 fibre indoor-outdoor stranded tube fibre cable.	Eca	36 – 144 Fibres	

Indoor Distribution Fibre Cable				
FADCX**-24	50µm multimode OM3 fibre indoor distribution fibre cable.	Cca-s1a, d1, a1	4 – 24 Fibres	ft.
FADCX**-37	50µm multimode OM3 fibre indoor distribution fibre cable.	Dca-s2, d2, a1	4 – 24 Fibres	
FADCZ**-24	50µm multimode OM4 fibre indoor distribution fibre cable.	Cca-s1a, d1, a1	4 – 24 Fibres	
FADCZ**-37	50µm multimode OM4 fibre indoor distribution fibre cable.	Dca-s2, d2, a1	4 – 24 Fibres	
FADC9**-24	9µm singlemode OS1/2 fibre indoor distribution fibre cable.	Cca-s1a, d1, a1	4 – 24 Fibres	
FADC9**-37	9µm singlemode OS1/2 fibre indoor distribution fibre cable.	Dca-s2, d2, a1	4 – 24 Fibres	



Indoor Distribution
Fibre Cable

OM1, OM2, and Outside Plant cables available. Contact Panduit Customer Service or check www.panduit.com for full range.

[< Previous Page](#) | [Table of Contents](#) | [Next Page >](#)

Fibre Connectors



FSC2MCXAQ



FSC2SCBU

Part Number	Description	Std. Pkg. Qty.	Std. Ctn. Qty.
OptiCam™ Pre-Polished Connectors			
FLCSMCXAQY	LC 50/125µm OM3/OM4 multimode simplex connector, Aqua boot.	1	10
FLCSSCBUY	LC 9/125µm singlemode simplex fiber optic connector for 900µm.	1	10
OptiCam™ Field Polished Connectors			
FSC2MCXAQ	SC2 OM3/OM4 900µm multimode simplex fiber optic connector. Aqua boot.	1	10
FSC2SCBU	SC2 OS2 900µm singlemode simplex fiber optic connector, Blue boot.	1	10

Fibre Patch Cords and Pigtails



FX2ELLNLNSNM***



FX1BN1NNNSNM001

Part Number	Description	Std. Pkg. Qty.	Std. Ctn. Qty.
Opti-Core™ Fiber Optic Patch Cords			
FX2ELLNLNSNM002	2-fiber OM3 10 GbE LC duplex to LC duplex patch cord, LSZH, 1.6mm jacketed cable, 2m.	1	10
FX2ELLNLNSNM003	2-fiber OM3 10 GbE LC duplex to LC duplex patch cord, LSZH, 1.6mm jacketed cable, 3m.	1	10
F92ELLNLNSNM002	2-fiber OS2 LC duplex to LC duplex patch cord, LSZH, 1.6mm jacketed cable, 2m.	1	10
F92ELLNLNSNM003	2-fiber OS2 LC duplex to LC duplex patch cord, LSZH, 1.6mm jacketed cable, 3m.	1	10
FX23LSNSNSNM002	2-fiber OM3 10 GbE SC duplex to SC duplex patch cord, LSZH, 3mm jacketed cable, 2m.	1	10
FX23LSNSNSNM003	2-fiber OM3 10 GbE SC duplex to SC duplex patch cord, LSZH, 3mm jacketed cable, 3m.	1	10
F923LSNSNSNM002	2-fiber OS2 SC duplex to SC duplex patch cord, LSZH, 3mm jacketed cable, 2m.	1	10
F923LSNSNSNM003	2-fiber OS2 SC duplex to SC duplex patch cord, LSZH, 3mm jacketed cable, 3m.	1	10
FX2ELLNLNSNM005	2-fiber OM3 10 GbE LC duplex to LC duplex patch cord, LSZH, 1.6mm jacketed cable, 5m.	1	10
FX1BN1NNNSNM001	1-fiber OM3, 900µm buffered fiber, LC to pigtail with no jacket, 1m.	1	10
F91BN1NNNSNM001	1-fiber OS2, 900µm buffered fiber, LC to pigtail with no jacket, 1m.	1	10
FZ2ELLNLNSNM002	OM4, 2 fiber 1.6mm patch cord, low smoke zero halogen, LC duplex to LC duplex, standard polarity, standard insertion loss – 2 meters.	1	10
FZ2ELLNLNSNM003	OM4, 2 fiber 1.6mm patch cord, low smoke zero halogen, LC duplex to LC duplex, standard polarity, standard insertion loss – 3 meters.	1	10
FZ23LSNSNSNM002	OM4, 2 fiber 3mm patch cord, low smoke zero halogen, SC duplex to SC duplex, standard polarity, standard insertion loss – 2 Meters	1	10
FZ23LSNSNSNM003	OM4, 2 fiber 3mm patch cord, low smoke zero halogen, SC duplex to SC duplex, standard polarity, Standard Insertion loss – 3 meters.	1	10
FZ1BN1NNNSNM001	OM4, 1 fiber 900µm buffered pigtail, LC simplex to pigtail, standard polarity, standard insertion loss – 1 meters.	1	10

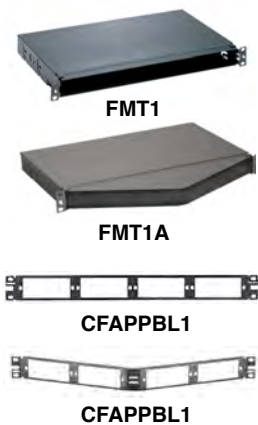
Available in 1, 2, 3, 5, and 10m lengths. Contact Panduit Customer Service or check www.panduit.com for additional lengths.

OptiCam™ 2 Termination Tools



Part Number	Description	Min. Order Qty. (MOQ)	Min. Order Incrmt. (MOI)
FOCTT2-KIT	Includes: batteries, case, launch cords and one cradle for each OptiCam™ LC, SC2 and ST2 Connector.	1	1
FOCTT2-BKIT	Includes: batteries, case, launch cords and one cradle for each OptiCam™ LC, SC2 and ST2 Connector, Fitel cleaver, installation tools, cleaning and consumables.	1	1
FOCTT2-PKIT	Includes: batteries, case, launch cords and one cradle for each OptiCam™ LC, SC2 and ST2 Connector, Sumitomo cleaver, installation tools, cleaning and consumables.	1	1

Fibre Enclosures



Part Number	Description	Std. Pkg. Qty.	Std. Ctn. Qty.
FMT1	1 RU rack mount fibre tray.	1	—
FMT1A	1 RU angled rack mount fibre tray.	1	—
CFAPPBL1	Flat fiber patch panel, holds up to four FAP or FMP adapter panels, for use with the FMT1.	1	10
CFAPPBL1A	Angled fiber patch panel, holds up to four FAP or FMP adapter panels, for use with the FMT1A.	1	10

Fibre Adapter Panels



Part Number	Description	Std. Pkg. Qty.	Std. Ctn. Qty.
Fibre Adapter Panels			
FAP6WAQDSCZ	SC 10Gig™ OM3/OM4 FAP with six SC 10Gig™ duplex multimode fiber optic adapters (Aqua) with zirconia ceramic split sleeves.	1	10
FAP6WBUDSCZ	SC FAP with six SC duplex singlemode fiber optic adapters (Blue) with zirconia ceramic split sleeves.	1	10
FAP12WAQDLCZ	LC OM3/OM4 FAP with twelve LC 10 GbE duplex multimode fibre optic adapters (Aqua) with zirconia ceramic split sleeves.	1	10
FAP12WBUDLCZ	LC OS2 FAP with twelve LC duplex singlemode fibre optic adapters (Blue) with zirconia ceramic split sleeves.	1	10
FAPB	Blank FAP.	1	10

Racks, Shelves and Accessories



R4PCN



SRM19FM1

Part Number	Description	Std. Pkg. Qty.	Std. Ctn. Qty.
Racks			
R2P	2 post rack, 45 RU, with threaded rails.	1	—
R4PCN	4 post rack, 45 RU with cage nut rails, 760mm deep.	1	—
Rack Accessories			
S1224-C	#12-24 screws.	100	1000
CNWS1224-C	#12-24 cage nut with screws.	100	1000
CNWSM6-C	M6 cage nut with screws.	100	1000
R2PPDUB	PDU mounting kit, suits 2 post rack and 4 post rack.	1	—
TLBP1S-V	Tool-less blanking panel, 1 RU, suit cage nut holes.	5	—
CPAF1BLY	Blanking panel, angled, 1 RU.	1	10
NVPDUB	PDU brackets for switch cabinet (pack of 2).	1	—
SRB19BLY	Strain relief bar, extended 2".	1	10
Shelves			
SRM19FM1	1 RU front mount shelf, 480mm deep.	1	—
RSHLF	1 RU front and rear mount shelf, 760mm deep.	1	—

Cable Managers



WMPV45E



PR2VD06



PR2VD12 PR2VFD06



WMPFSE



NMF2

Part Number	Description	Width (In.)	Std. Pkg. Qty.	Std. Ctn. Qty.
Vertical Managers				
WMPV45E	NetRunner™ Vertical Cable Manager, front and rear, 45 RU, 4" x 5".	—	1	—
WMPVHC45E	NetRunner™ Vertical Cable Manager, front and rear, 45 RU, 6" x 6".	—	1	—
PR2VD06	PatchRunner™ 2 Vertical Cable Manager combines high-density capability and versatility, freeing up valuable floor space. The fully pre-assembled manager lowers overall costs and sets the standard for the entire cable management industry. Dual-sided, Steel, 45RU, Black, 1pc, Includes two full-length metal, dual-hinging, push-to-close doors.	6	1	—
PR2VD08	PatchRunner™ 2 Vertical Cable Manager combines high-density capability and versatility, freeing up valuable floor space. The fully pre-assembled manager lowers overall costs and sets the standard for the entire cable management industry. Dual-sided, Steel, 45RU, Black, 1pc, Includes two full-length metal, dual-hinging, push-to-close doors.	8	1	—
PR2VD10	PatchRunner™ 2 Vertical Cable Manager combines high-density capability and versatility, freeing up valuable floor space. The fully pre-assembled manager lowers overall costs and sets the standard for the entire cable management industry. Dual-sided, Steel, 45RU, Black, 1pc, Includes two full-length metal, dual-hinging, push-to-close doors.	10	1	—
PR2VD12	PatchRunner™ 2 Vertical Cable Manager combines high-density capability and versatility, freeing up valuable floor space. The fully pre-assembled manager lowers overall costs and sets the standard for the entire cable management industry. Dual-sided, Steel, 45RU, Black, 1pc, Includes two full-length metal, dual-hinging, push-to-close doors.	12	1	—
PR2VFD06	PatchRunner™ 2 Vertical Cable Manager combines high-density capability and versatility, freeing up valuable floor space. The fully pre-assembled manager lowers overall costs and sets the standard for the entire cable management industry. Single-sided, Steel, 45RU, Black, 1pc, Includes one full-length metal, dual-hinging, push-to-close door.	6	1	—
Horizontal Managers				
WMPFSE	PatchLink™ Horizontal Cable Manager, front only, 1 RU.	—	1	—
WMP1E	Horizontal cable manager front and rear, 2 RU.	—	1	—
WMPF1E	Horizontal cable manager front only, 2 RU.	—	1	—
NMF1	1 RU horizontal cable manager with hinged cover, front only	—	1	—
NMF2	2 RU horizontal cable manager with hinged cover, front only.	—	1	—
CMPHF1	1 RU horizontal panel d-rings, front only.	—	1	—
CMPHHF1	1 RU horizontal panel d-rings, high density, front only.	—	1	—

Zone Enclosures



PZAEWM3



PZICEE



PZWMC12W



PZLRB4U



PZCFK-E



CUFMB24BL

Part Number	Description	Std. Pkg. Qty.	Std. Ctn. Qty.
PZAEWM3	PanZone™ Active Wall Mount Enclosure, includes mounting template for quick installation.	1	—
PZICEE	Economical passive in-ceiling zone cabling enclosure. Accepts up to 8 RU of standard 19" patch panels. Includes mounting brackets and integrated horizontal slack manager. White. 23.50"H x 23.50"W x 13.43"D (596.9mm x 596.9mm x 341.1mm).	1	—
PZWMC12W	PanZone™ Wall Mount Cabinet with windowed front door. 12 RU.	1	—
PZLRB4U	4 RU ladder rack bracket. Bracket fits Wyr-Grid™ Overhead Cable Tray.	1	—
PZCFK-E	Wall mount cabinet fan kit, European style, for use with PZC12 wall mount cabinets.	1	—
CUFMB24BL	Raised floor consolidation point enclosure, accepts Mini-Com™ Modules, with removable grommet plate.	1	—

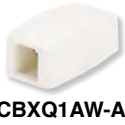
Cabinets



D-Type Cabinets

Part Number	Description	Std. Pkg. Qty.	Std. Ctn. Qty.
DN8212B	Net-Verse™ D-Type Cabinet Frame, 42 RU. Top panel with brush openings. Two sets cage nut equipment rails. Single hinge perforated front door. Split perforated rear doors. Horizontally split side panels (4). Two full length PDU brackets. Dimensions: 80.5in H x 31.5in W x 39.4in D (2045mm x 800mm x 1000mm).	1	—
DN8219B	Net-Verse™ D-Type Cabinet Frame, 42 RU. Top panel with brush openings. Two sets cage nut equipment rails. Single hinge perforated front door. Split perforated rear doors. Two full length PDU brackets. Dimensions: 80.5H x 31.5W x 39.4D (2045mm x 800mm x 1000mm).	1	—
DN8222B	Net-Verse™ D-Type Cabinet Frame, 42 RU. Top panel with brush openings. Two sets cage nut equipment rails. Single hinge perforated front door. Split perforated rear doors. Horizontally split side panels (4). Two full length PDU brackets. Dimensions: 80.5in H x 31.5in W x 47.2in D (2045mm x 800mm x 1200mm).	1	—
DN8229B	Net-Verse™ D-Type Cabinet Frame, 42 RU. Top panel with brush openings. Two sets cage nut equipment rails. Single hinge perforated front door. Split perforated rear doors. Two full length PDU brackets. Dimensions: 80.5H x 31.5W x 47.2D (2045mm x 800mm x 1200mm).	1	—
DN8512B	Net-Verse™ D-Type Cabinet Frame, 45 RU. Top panel with brush openings. Two sets cage nut equipment rails. Single hinge perforated front door. Split perforated rear doors. Horizontally split side panels (4). Two full length PDU brackets. Dimensions: 85.7in H x 31.5in W x 39.4in D (2178mm x 800mm x 1000mm).	1	—
DN8519B	Net-Verse™ D-Type Cabinet Frame, 45 RU. Top panel with brush openings. Two sets cage nut equipment rails. Single hinge perforated front door. Split perforated rear doors. Two full length PDU brackets. Dimensions: 85.7H x 31.5W x 39.4D (2178mm x 800mm x 1000mm).	1	—
DN8529B	Net-Verse™ D-Type Cabinet Frame, 45 RU. Top panel with brush openings. Two sets cage nut equipment rails. Single hinge perforated front door. Split perforated rear doors. Two full length PDU brackets. Dimensions: 85.7H x 31.5W x 47.2D (2178mm x 800mm x 1200mm).	1	—
DN6212B	Net-Verse™ D-Type Cabinet Frame, 42 RU. Top panel with brush openings. Two sets cage nut equipment rails. Single hinge perforated front door. Split perforated rear doors. Horizontally split side panels (4). Two full length PDU brackets. Dimensions: 80.5in H x 23.6in W x 39.4in D (2045mm x 600mm x 1000mm).	1	—
DN6219B	Net-Verse™ D-Type Cabinet Frame, 42 RU. Top panel with brush openings. Two sets cage nut equipment rails. Single hinge perforated front door. Split perforated rear doors. Two full length PDU brackets. Dimensions: 80.5H x 23.6W x 39.4D (2045mm x 600mm x 1000mm).	1	—
DN6222B	Net-Verse™ D-Type Cabinet Frame, 42 RU. Top panel with brush openings. Two sets cage nut equipment rails. Single hinge perforated front door. Split perforated rear doors. Horizontally split side panels (4). Two full length PDU brackets. Dimensions: 80.5in H x 23.6in W x 47.2in D (2045mm x 600mm x 1200mm).	1	—

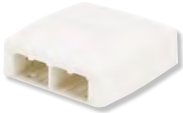
Surface Mount Boxes



CBXQ1AW-A



CBXQ2AW-A



CBXQ4AW-A



CBXQ61W-A

Part Number	Description	Std. Pkg. Qty.	Std. Ctn. Qty.
CBXQ1**-A	Mini-Com™ Surface Mount Box accepts one Mini-Com™ Module. Includes quick release cover, cable ties and adhesive backing.	1	10
CBXQ2**-A	Mini-Com™ Surface Mount Box accepts two Mini-Com™ Modules. Includes quick release cover. Supplied with cable ties, adhesive backing, label and label cover.	1	10
CBXQ4**-A	Mini-Com™ Surface Mount Box accepts four Mini-Com™ Modules. Includes quick release cover. Supplied with cable ties, adhesive backing, label and label cover.	1	10
CBXQ6**-A	Mini-Com™ Surface Mount Box accepts six Mini-Com™ Modules. Includes quick release cover. Supplied with cable ties, adhesive backing, label and label cover.	1	10

Additional colors available. Contact Panduit Customer Service or check www.panduit.com for additional information.

Audio Video Systems



HDMI1MBL



CMBBSWH



CMBBLWH



AFR4BCBL6

Part Number	Description	Std. Pkg. Qty.	Std. Ctn. Qty.
HDMI1MBL	HDMI 1M patch cord, Black.	1	10
HDMI2MBL	HDMI 2M patch cord, Black.	1	10
HDMI4MBL	HDMI 4M patch cord, Black.	1	10
CMBBSWH	Small in-wall box.	1	—
CMBBLWH	Large in-wall box.	1	—
CMBBRKT	Equipment bracket.	1	10
AFR4BCBL6	Six foot above floor raceway base and cover, Black.	1	—
AFR4JB2SBL	Above floor raceway, power rated two-piece snap together junction box, Black.	1	10
AFR4TRT70BL	Above floor raceway, transition fitting from above floor raceway to T70, Black.	1	10
AFR4RABL	Above floor raceway, right angle fitting, Black.	1	10
AFR4CCBL	Above floor raceway, coupler fitting, Black.	1	10
AFR4ECBL	Above floor raceway, end cap fitting, Black.	1	10

Grounding



CNBK



RGCBNJ660P22

Part Number	Description	Std. Pkg. Qty.	Std. Ctn. Qty.
CNBK	Bonding cage nut kit.	1	—
RGCBNJ660P22	Jumper kits, Common Bonding Network (CBN), #6 AWG (16mm ²) jumper, 60" (1.52m) length.	1	10
RGTBSG-C	Green thread-forming bonding screw, #12-24 x 1/2".	100	—

Power Distribution Unit



P12B34M

Part Number	Description	Std. Pkg. Qty.	Std. Ctn. Qty.
P12B34M	Horizontal basic power distribution unit, 16A, 230V, 10' (3m) power cord with an IEC 60309 2P+E 6h 16A plug, 12 C-13 receptacles, CE Marked.	1	—
P22B39M	Vertical basic power distribution unit, 16A, 230V, 10' (3m) power cord with an IEC 60309 2P+E 6h 16A plug, 20 C-13 and 2 C-19 receptacles, CE Marked.	1	—

Cable Ties



HLS



PLT

Part Number	Description	Std. Pkg. Qty.	Std. Ctn. Qty.
HLS-75R0	Hook and loop roll, 75'L (22.9m), 0.75"W (19.1mm), Black.	1	10
HLS-15R0	Hook and loop roll, 15'L (4.6m), 0.75"W (19.1mm), Black.	1	10
TTS-35RX0	Hook and loop roll, 10 roll pack, low profile, 35'L (10.7m), 0.75"W (19.1mm), Black.	1	10
PLT3I-C	Cable tie, 11.4"L (290mm), Intermediate, nylon, Natural.	100	1000
PLT3S-C2	Cable tie, 11.5"L (292mm) Standard, nylon, Red.	100	1000
PLT8LH-C0	Cable tie, 27.6"L (701mm), Light-Heavy, weather resistant, Black.	100	2000
PLT4S-M30	Cable tie, 14.5"L (368mm), Standard, heat stabilized, Black.	1000	5000
PLT3S-M2	Cable tie, 11.5"L (292mm) Standard, nylon, Red.	1000	10000
PLT4I-M	Cable tie, 14.5"L (368mm), Intermediate, nylon, Natural.	1000	10000

Labeling



LS8E-KIT-ACE



R100X150V1C

Part Number	Description	Std. Pkg. Qty.	Std. Ctn. Qty.
LS8EQ-KIT	Panduit® PanTher™ Hand-Held Label Printing System in kit. Includes LS8E-ACE 100-240 VAC power adapter for Europe along with the hand-held printer, one cassette of S100X150VAC self-laminating labels, six AA alkaline batteries, the LS8-CASE rigid carrying case, the LS8-PCKIT USB cable and PC interface software, the LS8-IB protective impact bumper, the LS8-WS wrist strap, a quick reference card and an operator's manual.	1	2
UILS8BW	Ultimate ID™ Label Cassette.	1	10
C252X030FJC	Modular patch panel (CP) adhesive label cassette.	1	10
S100X150VAC	P1 cassette, self-laminating label, vinyl, 1.00" W x 1.50" H, 0.50" POA, Clear/White.	1	10
R100X150V1C	Turn-Tell™ Patch Cord Label Cassette.	1	10

Security Devices



PSL-LCAB-BU



FLCCLIW-X



PSL-DCJB



PSL-DCPLRX

Part Number	Description	Std. Pkg. Qty.	Std. Ctn. Qty.
PSL-LCAB-AQ	LC duplex adapter blockout device, ten devices (Blue) and one removal tool (Aqua).	1	20
PSL-LCAB-BU	LC duplex adapter blockout device, ten devices (Blue) and one removal tool (Black).	1	20
FLCCLIW-X	LC patch plug lock-in device, ten devices and one removal tool.	10	100
PSL-DCJB-BL	Jack module blockout device, ten block-outs (Black) and one removal tool (Black).	1	20
PSL-DCJB-BU	Jack module blockout device, ten block-outs (Blue) and one removal tool (Black).	1	20
PSL-DCJB	Jack module blockout device, ten block-outs (Red) and one removal tool (Black).	1	20
PSL-DCPLRX-BL	Recessed RJ45 plug lock-in device, ten devices (Black) and one installation/removal tool (Black).	1	20
PSL-DCPLRX-BU	Recessed RJ45 plug lock-in device, ten devices (Blue) and one installation/removal tool (Black).	1	20
PSL-DCPLRX	Recessed RJ45 plug lock-in device, ten devices (Red) and one installation/removal tool (Black).	1	20

Tools



EGJT-1



TGJT



FCAMKIT

Part Number	Description	Std. Pkg. Qty.	Std. Ctn. Qty.
EGJT-1	TG jack and field term plug termination tool.	1	50
TGJT	TG jack termination tool, for high-volume installations.	1	24
CJAST	Copper cable jacket stripper.	1	1
CWST	Copper wire snips.	1	1
PDT110	110 punchdown tool.	1	1
CBOT24K	Cable bundle organizing tool.	1	10
FIELDKIT	Field polish fiber optic termination kit for all field polish connectors.	1	—
FCAMKIT	OptiCam™ Termination Kit for pre-polished connectors.	1	1
MPT5-8AS	Crimp tool for TX6™ PLUS and Pan-Plug™ Modular Plugs.	1	1



PANDUIT™

Panduit CBC London
6 Broad Street Place
London
EC2M 7JH
UK

phone +44 (0) 208 601 7200

EMEA-CustomerServices@panduit.com

www.panduit.com